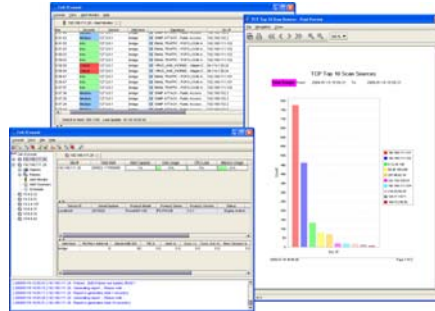


### Cell IPS

#### Intrusion Prevention System



#### Overview

Blended threats such as Internet worms and intrusion attacks cause severe security impacts incurring huge financial loss to enterprises and service providers. During those attacks become more sophisticated, the paradigm of security protection has been shifting from passive protection approach with detection only to a proactive prevention approach with automatic blocking to counter this challenge.

Cell Intrusion Prevention System (IPS) is a next-generation of network security appliance with Cell's proprietary Custom Real-time Intelligent Operation System (CRIOS) and Intelligent Packet Processing Engine (IPPE) developed and embedded into an appliance system. It can take one step ahead the hacker penetration and prevent any attacking packets including notorious spywares, intrusion attacks, virus/worms and tunneling software to reach your network in real-time basis. Cell IPS supports 3000 pre-defined signature rules to protect your networks and with on-line Signatures Update (SU)/Knowledge-Base (KB) automatically from Cell Security Service Centre (SSC) to defense against any latest threats and intrusion attacks. Customizable signatures and firewall policies also enable IPS to be configurable in any different network environments and conditions.

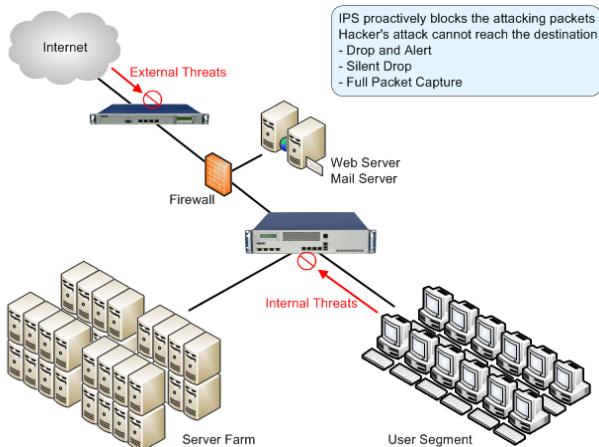
With multiple of Cell IPS deploying in a large or multi-national network infrastructure, Cell NetsVision iCMS-IPS can be deployed as a centralized management platform to manage all Cell IPS devices across networks or regions. It is a 3-tier network architecture topology to operate, administrate and manage Cell IPS through the integration of network security technologies, policy design, signature knowledge-base, database and security procedures.

#### Features

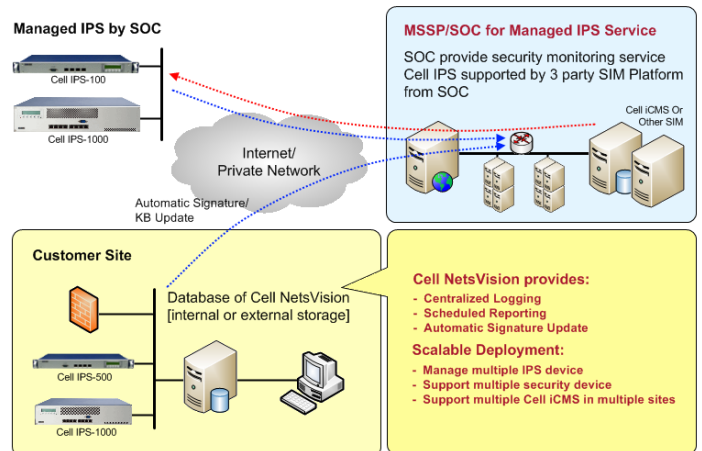
- Robust Performance of Cell CRIOS & IPPE Engine
- Integrated with Stateful Inspection Firewall, Bridging, Gateway & Passive Modes
- Detect & Block Intrusion Attacks, Internet Virus/Worm, Spyware, Tunneling & P2P Software
- Protect Against 3000 Pre-defined Attacks Signature
- Automatic Push On-line SU/KB from Cell SSC
- Standalone (Cell JConsole GUI) or 3-Tier of Centralized Management (Cell NetsVision, iCMS-IPS)
- Powerful System Administration and Database Management
- Technology Proven for Service Provider for Managed IPS Service

#### Application






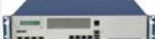
##### Cell IPS Application



##### Cell IPS Managed Service Application



### Hardware Specification

Product Models	Cell IPS-100	Cell IPS-100E*	Cell IPS-200	Cell IPS-500	Cell IPS-800	Cell IPS-1000P
<b>Hardware Appliance</b>						
<b>Hardware System</b>	19" 1U Rack-mount Intel based platform	19" 1U Rack-mount Intel based platform with NP/ASIC	19" 1U Rack-mount Intel based platform	19" 1U Rack-mount Intel based platform	19" 1U Rack-mount Intel based platform	19" 2U Rack-mount Intel based platform
<b>Physical Interfaces</b>	4 FE Interfaces 2 FE Hardware bypass	4 FE Interfaces 2 FE Hardware bypass	4 FE Interfaces 2 FE Hardware bypass	4 GE Interfaces 2 GE Hardware bypass	4 GE Interfaces 2 GE Hardware bypass	4 GE, 4 optional SFP 2 GE Hardware bypass
<b>System Console</b>	Serial console port RS232 (DB9)	Serial console port RS232 (DB9)	Serial console port RS232 (DB9)	Serial console port RS232 (DB9)	Serial console port RS232 (DB9)	Serial console port RS232 (DB9)
<b>Security Engine</b>	IDP, IAM	AV, IDP, IAM, WF	IDP, IAM	IDP, IAM	IDP, IAM	IDP, IAM
<b>Hardware Redundancy</b>	No	No	No	No	No	Dual power/system fan Optional RAID HDD
<b>Hardware By-Pass</b>	Yes	Yes	Yes	Yes	Yes	Yes
<b>Dimension</b>	430 x 44 x 369 mm	430 x 44 x 369 mm	430 x 44 x 369 mm	430 x 44 x 369 mm	430 x 44 x 369 mm	430 x 88 x 515 mm
<b>Weight</b>	4.5 Kg	4.5 Kg	4.5 Kg	4.5 Kg	4.5 Kg	18 kg
<b>System Performance</b>	Max 100Mbps 250,000 sessions	Max 100Mbps 350,000 sessions	Max 200Mbps 350,000 sessions	Max 500Mbps 500,000 sessions	Max 800Mbps 800,000 sessions	Max 1Gbps 1,000,000 sessions
<b>Power Supply Voltage</b>	Full-range ATX 250W	Full-range ATX 250W	Full-range ATX 250W	Full-range ATX 250W	Full-range ATX 250W	1+1 Redundant 500W Each
<b>Power Input</b>	90-264VAC, 47/63 Hz	90-264VAC, 47/63 Hz	90-264VAC, 47/63 Hz	90-264VAC, 47/63 Hz	90-264VAC, 47/63 Hz	100-240 VAC, 50/60 Hz
<b>Operation Temp</b>	0 to 40 degree	0 to 40 degree	0 to 40 degree	0 to 40 degree	0 to 40 degree	0 to 40 degree
<b>Operation Humidity</b>	5-85%@40C	5-85%@40C	5-85%@40C	5-85%@40C	5-85%@40C	5-85%@40C
<b>Standard Regulatory</b>	FCC, CE, RoHS	FCC, CE, RoHS	FCC, CE, RoHS	FCC, CE, RoHS	FCC, CE, RoHS	FCC, CE, RoHS

\*refer to separate datasheet

### System Specification

#### System Operation System

- Cell CRIOS (Custom Real-time Intelligent OS)
- Cell IPPE (Intelligent Packet Processing Engine)

#### Mode of operation

- Gateway, Bridging, Passive (IDS)

#### External Firewall Blocking

- Checkpoint, NetScreen and Cisco PIX

#### Stateful Firewall and NAT

- Standard stateful firewall inspection
- Block attacks with other modules
- Network/Port address translation

#### Language Supported

- English, Trad & Sim Chinese, Japanese

#### Signature/KnowledgeBase (KB) Update

- 3000 pre-defined signatures/KB
- Manual, automatic or pre-schedule by Cell SSC

#### IPS Sensor Configuration

- Standalone or multiple IPS sensors support
- One IPS sensor support the logs to Cell iCMS-IPS and SIM for resilience purpose

#### System Administration/Diagnostic

- Cell JConsole (via Java-based GUI)
- System diagnostic (via serial console port)
- System status (via LCD at front panel)

#### Security Engine

- Anti-Virus Scanning & Blocking (AV)
- Intrusion Detection & Prevention (IDP)
- Internet Applications Management (IAM)
- Web Filtering (WF)

#### Detection Capability

- Stateful pattern matching (signature detection)
- HTTP protocol flow analyzer
- Multi-rule search by protocol, generic content, packet anomaly, protocol anomaly, traffic anomaly and keywords
- Real-time TCP sessions and packet loggings
- TCP segment reassembler
- Support 802.1q VLAN detection
- IP fragmentation
- SYN flooding
- UDP and ICMP flooding control
- Support IM and P2P detection

#### Database Management

- Built-in database - backup, purge and restore
- External open source database via Cell NetsVision
- Support policy backup or external data storage

#### Report Management

- Build in reporting and analysis tools
- Bandwidth reporting
- Export to PDF, Excel, HTML and others

#### Interface to SIM/SEM Platform

- Snort SNMP v2 Trap
- UDP syslog messages
- Standard interface to third party of Security Information Management (SIM) platform

#### Cell IPS Centralized Management

- With Cell NetsVision iCMS-IPS platform
- 3-tier network deployment
- Support multi-iCMS Commanders in a network and managed by a single iCMS Manager
- Support external storage system for data storage, back up or external database

### Cell NetsVision, iCMS-IPS Specification

Cell intelligent Cell Management System for Cell IPS Products (iCMS-IPS) is the complete, comprehensive and centralized network security management System platform for operation, administration and management (OAM) of Cell IPS products in highly performance and scalability purpose. This iCMS-IPS provides mainly for network visualization, fault monitoring, performance, configuration and security managements for service providers. With Cell iCMS-IPS centralized security management, all IPS products with all security logs/events can be remotely monitored at the SOC (Security Operation Centre) for security monitoring, devices configuration, database management, fault and alarm management. Please refer to Cell NetsVision iCMS-IPS datasheet for specification and ordering information.

#### About Cell Technology

Cell Technology headquartered at Hong Kong SAR, a network & security technology provider specializes in design, develop and deliver innovative and intelligent IP packet processing platform into software and hardware appliances. Cell product solutions including Cell IPS, Janus, TMS, NetsVision and NetsAccess address the business needs that optimize the IP network performance, secure the network security and resiliency, and manage the quality of IP services. For more information, please visit [www.cell-technology.net](http://www.cell-technology.net).

Cell IPS Datasheet -EN/2011-04 Copyright © 2011 Cell Technology Limited. All rights reserved. Specifications are subject to change without notice.